

CARE OF HOUSEHOLD PETS AND SERVICE ANIMALS IN DISASTERS

We all love our furry friends and want to do what is best for them. It is ultimately our responsibility to take care of our pets during a disaster. The following tips can help us to be prepared and to ease anxiety—theirs and ours!

It is Important to Prepare a Disaster Kit for Your Pet(s) and Have it Ready *In Advance!*

Remember to:

- Store your Disaster Kit in an area where it can be easily retrieved.
- Check the contents of the Disaster Kit twice a year, when clocks change for Daylight Savings Time.
- Rotate all food in the Disaster Kit every two months. Replace with fresh.

If you plan to leave your home, include in the Disaster Kit:

- Food, water, and bowls for each pet. Keep a 3-day supply for evacuations.

(Keep a 2-week supply for sheltering-at-home.)

- Plastic bags, paper towels, and spray disinfectant for animal waste clean-up.
- Collars, tags, harnesses, and leashes for all pets, including cats.
- Copies of your pet's medical and vaccination records. Boarding facilities may not accept your pets without proof of health.
- A 2-week supply of medication, along with a copy of the prescription.
- A recent photo of you with your pet.
- A crate or travelling carrier large enough for your pet to stand up and turn around. Label the crate with your pet's name, your name, phone number, and where you can be reached.



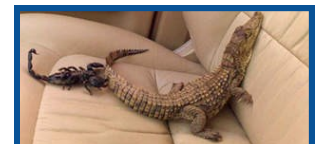
Develop an Emergency Plan for Animals Left Behind.

Leaving your pet or service animal behind should be a last resort. But if you must, follow these guidelines:

- * Never leave your animal tied up or let loose outside the home. Animal Control may need to treat loose pets as abandoned and they may be euthanized.

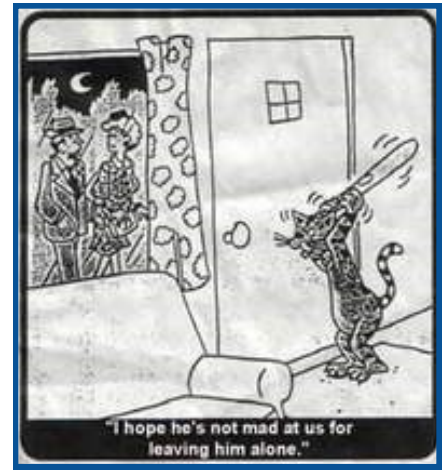


- * Do not leave unfamiliar foods and treats. They may overeat, which can lead to intestinal problems.
- * Provide plenty of water in a heavy bowl that cannot be tipped over.
- * Always keep exotic animals in separate rooms. Leave warnings and handling instructions.
- * Paste labels clearly for rescue workers about the animals they will encounter, as well as needs and locations.
- * Leave a well-placed note on how and where you can be contacted.



Meteorological Hazards

- ◇ **HURRICANE:** If you've lived in Flagler Beach of late, you are fully aware of this particular hazard. It is up to you to protect your home as best you can, then choose to evacuate or shelter-in-place. Flagler County will announce at *Hurricane Watch* stage which shelter(s) will be designated pet friendly. For Information: (386) 586-5111.
- ◇ **WILDFIRE:** If officials issue an evacuation order, leave immediately, taking your crated pets with you.
- ◇ **THUNDERSTORM:** Stay home, but if caught outside:
 - ⇒ Seek shelter. Use the phone only for emergencies, and stay away from windows.
 - ⇒ Do NOT stand under an isolated tree in an open area; it may act as a lightning rod.
 - ⇒ Stay away from open water, like a pond, lake, river, or ocean.
 - ⇒ Avoid metal objects that could conduct electricity, like golf clubs and golf carts, motorcycles, bicycles, scooters, wire fences, clotheslines, metal pipes and rails, and umbrellas.
 - ⇒ Move to a low place, like a ravine or ditch.
 - ⇒ KNOW THIS: A person or animal struck by lightning does not carry an electrical charge—it is safe to provide first aid. Call 911, then check for burns next to metal buckles or jewelry, and your pet's halters and collars.
- ◇ **TORNADO:**
 - ⇒ Do not drive. If you are driving and spot a tornado, leave the car and take shelter in a nearby building or ditch, taking your animals with you. Protect your head and stay low to the ground.
 - ⇒ If you live in a manufactured home, leave and take shelter in a substantial structure, taking your animals with you. If there is no shelter, lie flat in the nearest ditch or ravine.
 - ⇒ In a house, a basement is safest; otherwise, stay in the center of the home away from windows, or in a small room on the ground floor away from outside walls. Protect your head under solid furniture or a mattress.
 - ⇒ Tune in to a local radio station to learn when the "all-clear" is given, as sometimes more than one tornado can develop in a violent storm.
 - ⇒ Be aware of additional hazards, like downed power lines, gas or oil leaks, or other spilled hazardous materials.



PET LOST & FOUND

FlaglerLive.com has graciously agreed to provide a "Bulletin Board" to reunite families with their pets.

If your pet is lost, contact flaglerlive.com to post a description along with your contact information.

If you find a stray animal and IF it is safe to approach and control, take it to a shelter, the Humane Society, or a veterinarian. Then post the location and description of the animal on flaglerlive.com for a Happy Reunion between a pet and grateful owner!

RECOVERY When the disaster has passed:

- ◆ Check your pet for injury or exposure to chemicals. If you have any concerns, contact your veterinarian.
- ◆ Do not remove your animal from its crate until you are in a closed room and it is calm.
- ◆ Do not go outside until you are certain it is safe for you and your pet.
- ◆ Give your animal small amounts of food several times a day and slowly increase the amount over the next few days.
- ◆ Let your animal have plenty of uninterrupted sleep.
- ◆ When fully rested, provide a favorite toy and encourage it to play.
- ◆ Avoid unfamiliar activities such as bathing, excessive exercise, or diet changes for the first week or so.